

# Update Power BI with Power Automate.

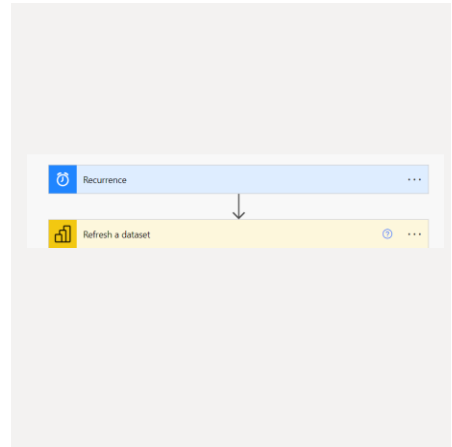
Swipe →

# Introduction

In today's business environment, data-driven decision making is essential for success and competitiveness. Organizations increasingly rely on business intelligence tools like Power BI, which allows for data visualization and real-time reporting. However, for this data to be truly useful, it must always be up to date and reflect the most recent state of the operation or analysis.

# Update Power BI with Power Automate.

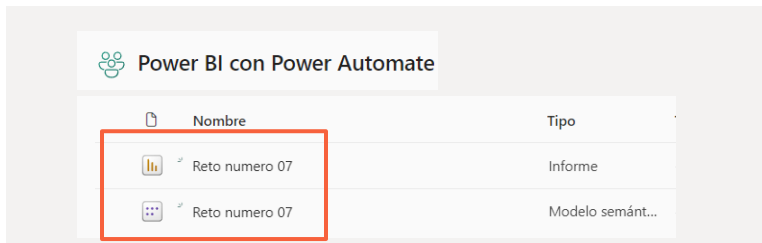
The integration between Power BI and Power Automate allows for the automation of report and dashboard updates, ensuring that information is always up to date for decision-making. This functionality is key for companies that handle large volumes of data and need real-time access to the latest information. Through Power Automate, automated workflows can be configured to update datasets or reports in Power BI without manual intervention, improving efficiency and reducing errors.



# Let's get to work!!!

The first step is to have our Power BI uploaded to the Power BI service.

As we can see, there is the semantic model, which we will update with Power Automate, and the report. We also need to identify the workspace where our target report will be located.



Power BI con Power Automate

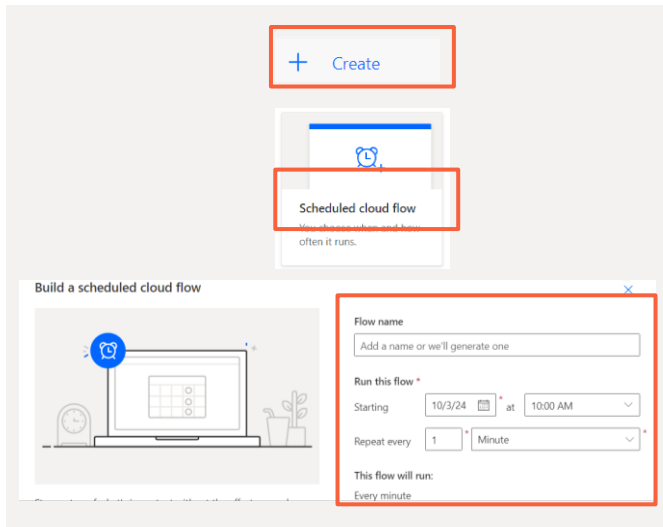
Nombre	Tipo
Reto numero 07	Informe
Reto numero 07	Modelo semántico

# Let's get to work!!!

Next, we go to Power Automate. Select Create.

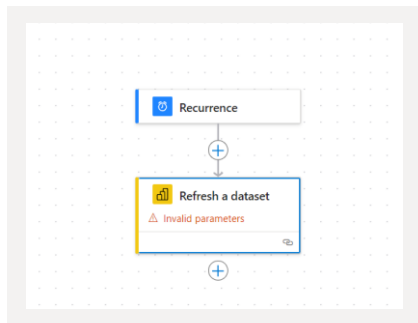
After that, we select Schedule Flow.

Next, we schedule its recurrence, start date, and frequency.



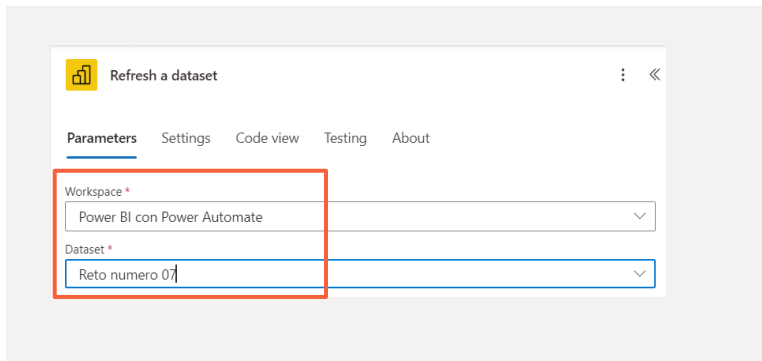
# Let's get to work!!!

Posterior al seleccionar, crear, debemos ingresar la actividad que conecta , le uso de Power Automate con Power BI, y el objetivo del día de hoy , el cual es actualizar el modelo semántico, empleando la función Actualizar un conjunto de datos



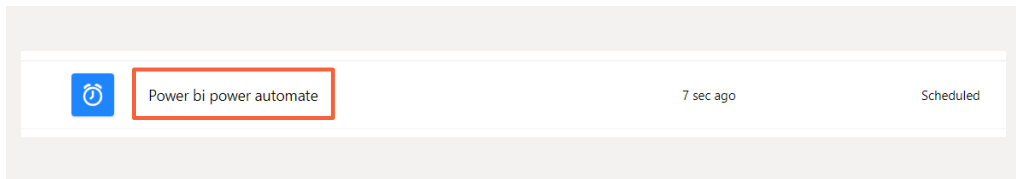
# Let's get to work!!!

After selecting create, we need to enter the activity that connects the use of Power Automate with Power BI, and today's goal, which is to update the semantic model using the function 'Refresh a dataset'



# Let's get to work!!!

Then schedule it, save it, and run a test or trial of its functionality. With these simple steps, you can update a semantic model using Power Automate.





# Benefits and advantages

- **Real-time updates:** By integrating Power Automate, Power BI dashboards and reports can be automatically updated in real time based on specific events, such as the arrival of new data or updates in other systems
- **Increased operational efficiency:** By eliminating the need for manual data updates in Power BI, organizations save time.
- **Error reduction:** Process automation minimizes human errors, such as forgetting to update a report or entering incorrect data.
- **Flexible scheduling:** Power Automate allows data updates to be scheduled according to business needs.

---

# CAN I HELP YOU?

---

**REMEMBER TO  
SAVE THIS  
ARTICLE**



[WWW.FP20ANALYTICS.COM](http://WWW.FP20ANALYTICS.COM)